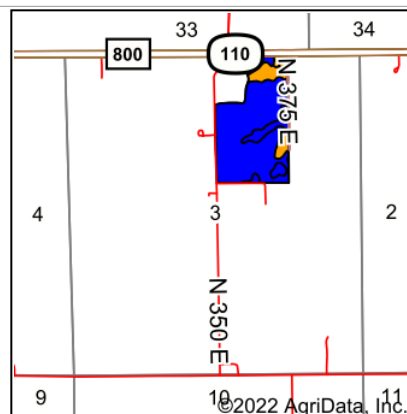
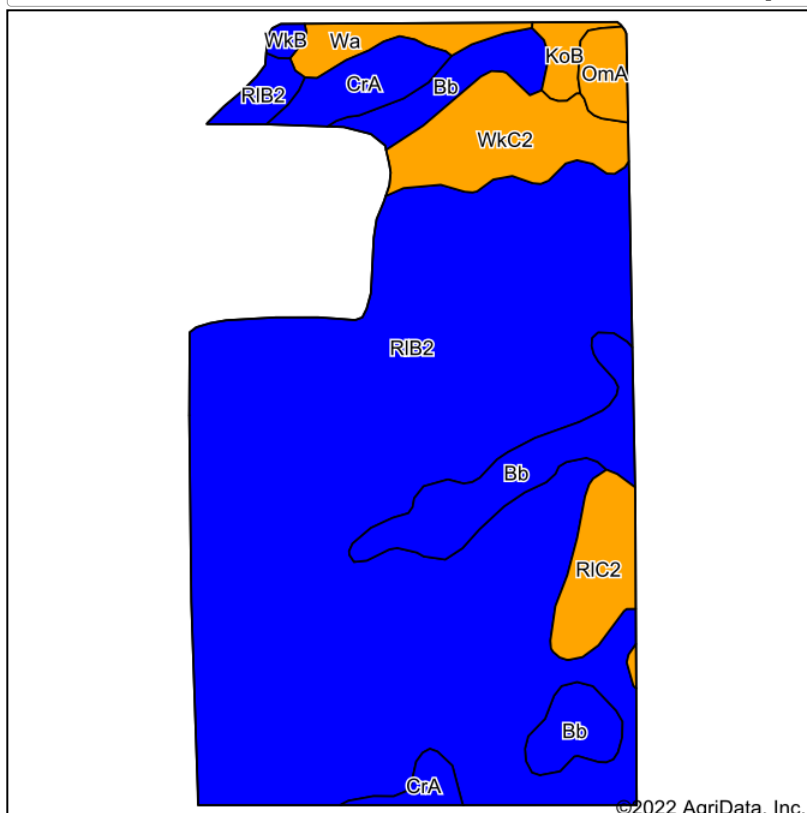


Soils Map



State: **Indiana**
 County: **Fulton**
 Location: **3-31N-3E**
 Township: **Newcastle**
 Acres: **59.86**
 Date: **8/5/2022**



Maps Provided By:



Soils data provided by USDA and NRCS.

Area Symbol: IN049, Soil Area Version: 24								
Code	Soil Description	Acres	Percent of field	Non-Irr Class Legend	Non-Irr Class *c	Corn Bu	Soybeans Bu	*n NCCPI Soybeans
RIB2	Riddles fine sandy loam, 2 to 6 percent slopes	43.16	72.1%		Ile	141	49	59
Bb	Barry loam	5.98	10.0%		Ilw	175	49	71
WkC2	Wawasee fine sandy loam, 6 to 12 percent slopes, eroded	3.59	6.0%		Ille	130	46	56
CrA	Crosier loam, 0 to 2 percent slopes	2.16	3.6%		Ilw	154	50	54
RIC2	Riddles fine sandy loam, 6 to 12 percent slopes, eroded	2.16	3.6%		Ille	113	40	60
Wa	Walkill silt loam	1.19	2.0%		Illw	175	49	81
OmA	Ormas loamy sand, 0 to 2 percent slopes	0.81	1.4%		Ills	90	32	38
KoB	Kosciusko-Ormas complex, 2 to 6 percent slopes	0.60	1.0%		Ille	91	32	47
WkB	Wawasee fine sandy loam, 2 to 6 percent slopes	0.21	0.4%		Ile	145	51	65
Weighted Average					2.14	142.7	48.1	*n 59.9

*n: The aggregation method is "Weighted Average using all components"

*c: Using Capabilities Class Dominant Condition Aggregation Method

Soils data provided by USDA and NRCS.